



**RPH**

Roof Penetration Housings, LLC

12423 Blanco Rd #120, San Antonio, Texas 78216

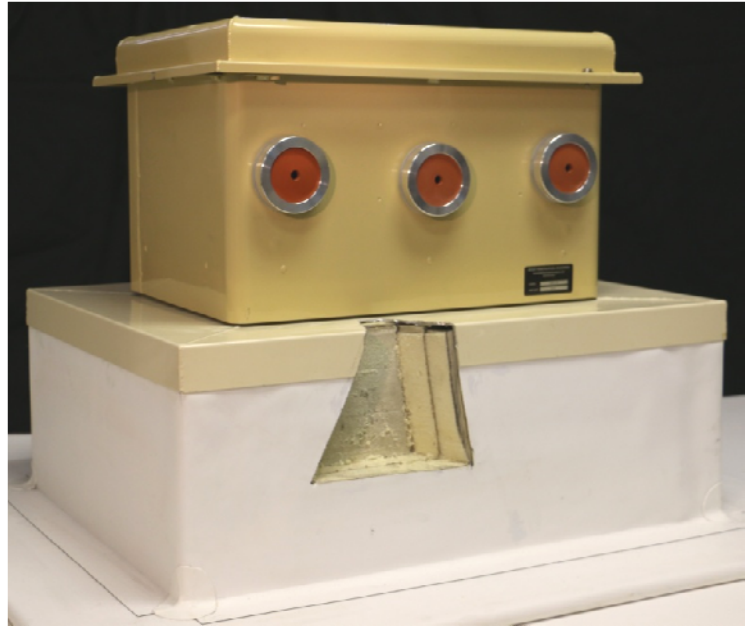


# Submittal

- AWI-161010      SMALL**
- AWI-201412      MEDIUM**
- AWI-343424      MEGA**

## VAULT® Specification:

The "AWI" VAULT® model is a 20-year insured, warrantied, all-aluminum, multi-penetrant pathway to the roof, air<sup>1</sup> & wind rated and Insulation Integrity<sup>2</sup> powder-coated heavy gage aluminum engineered 4-pc. assembly. The "AWI" VAULT® is a configuration of a vandal-resistant lid, middle housing, insulation extension, and flanged curb and is designed to be used with our exclusive Silx14 aluminum & stainless exit seals. Our exit seals are designed to accommodate appropriate size pipes, cable, ductwork, or other desired penetrants.



<sup>1</sup>ALL "AWI" Vaults® are 3rd-party tested to comply with 2015 ICC Energy Code section C402, section ASTM E2178-11.  
<sup>2</sup>ASTM E2357-11.

## Project Information

|                   |
|-------------------|
| <b>JOB</b>        |
| Name              |
| Location          |
| <b>ARCHITECT</b>  |
| Name              |
| Location          |
| <b>CONTRACTOR</b> |
| Name              |
| Location          |
| <b>REP NAME</b>   |
|                   |
| <b>DATE</b>       |
|                   |





## OPTIONS

### EXIT SEALS

5000 SERIES 1/4" OD - 1.90" OD

6000 SERIES 2-1/8" OD- 3-1/8" OD

7000 SERIES 3 1/2" OD - 4 1/2" OD

16000 SERIES LARGE CUSTOM OD OVER 4"

DUCT WORK - VARIOUS

### EXTERNAL SUPPORTS

EDS - ELECTRIC DISCONNECT SUPPORT

SDS - SATELLITE DISH SUPPORT

### INTERNAL SUPPORTS

CABLE GUIDE

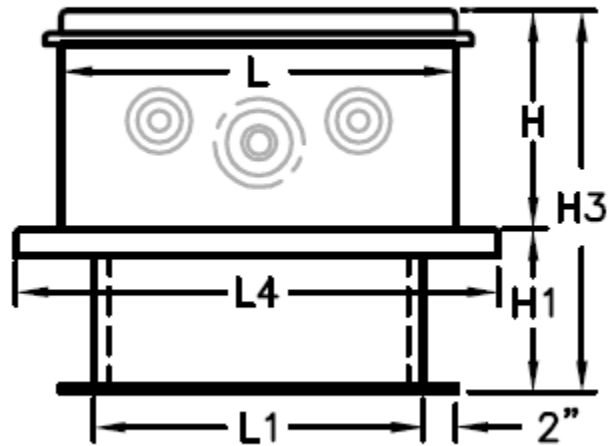
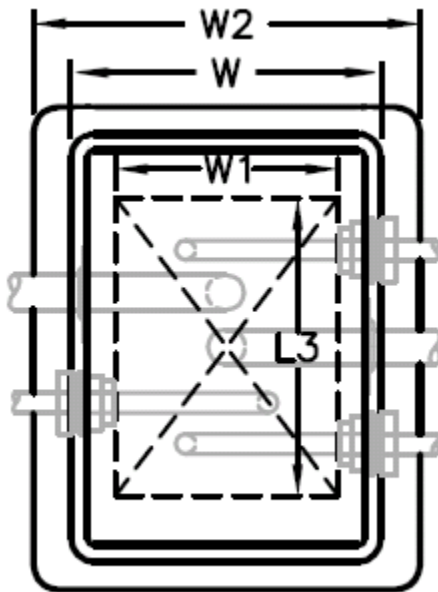
### EXIT SEAL CAPACITIES (5000 SERIES)

AWI-161010  
AWI-201412

8 EACH  
16 EACH

AWI-343424

24-36 EACH



| MODELS     | H       | H1  | H3      | L       | L1      | L3      | W       | W1     | W2      | L4      |
|------------|---------|-----|---------|---------|---------|---------|---------|--------|---------|---------|
| AWI-161010 | 12"     | 14" | 26"     | 16"     | 14 1/2" | 12"     | 12 3/4" | 5 1/2" | 20 3/4" | 24"     |
| AWI-201412 | 13 3/4" | 14" | 27 3/4" | 21 1/2" | 19 1/2" | 16 1/2" | 14 1/2" | 10     | 22 1/2" | 29 1/2" |
| AWI-343424 | 25"     | 14" | 39"     | 34"     | 32"     | 29"     | 34"     | 29"    | 42"     | 42"     |

Dimensions may vary slightly.