



**RPH**

Roof Penetration Housings, LLC

12423 Blanco Rd #120, San Antonio, Texas 78216



# Submittal

- AW-121022      MINI
- AW-161010      SMALL
- AW-201412      MEDIUM
- AW-343424      MEGA

## VAULT® Specification:

The "AW" VAULT® model is a 20-year insured, warrantied, all-aluminum, multi-penetrant pathway to the roof, with air<sup>1</sup> & wind<sup>2</sup> rating, and is a 3-pc. powder-coated heavy gage aluminum engineered assembly. The "AW" VAULT® is configured with a vandal-resistant lid, middle housing, and flanged curb designed to be used with our exclusive Silx14 aluminum & stainless steel exit seals. Our exit seals are designed to accommodate appropriate size pipes, cables, duct work, or other desired penetrants.



<sup>1</sup>ALL "AW" Vaults® are 3rd-party tested to comply with 2015 ICC Energy Code C402, section ASTM E2178-11  
<sup>2</sup>ASTM E2357-11

## Project Information

<b>JOB</b>
Name
Location
<b>ARCHITECT</b>
Name
Location
<b>CONTRACTOR</b>
Name
Location
<b>REP NAME</b>
<b>DATE</b>





## OPTIONS

### EXIT SEALS

5000 SERIES 1/4" OD - 1.90" OD

6000 SERIES 2-1/8" OD- 3-1/8" OD

7000 SERIES 3 1/2" OD - 4 1/2" OD

16000 SERIES LARGE CUSTOM OD OVER 4"

DUCT WORK - VARIOUS

### EXTERNAL SUPPORTS

EDS - ELECTRIC DISCONNECT SUPPORT

SDS - SATELLITE DISH SUPPORT

### INTERNAL SUPPORTS

CABLE GUIDE

### EXIT SEAL CAPACITIES (5000 SERIES)

AW-121022

6 EACH

AW-201412

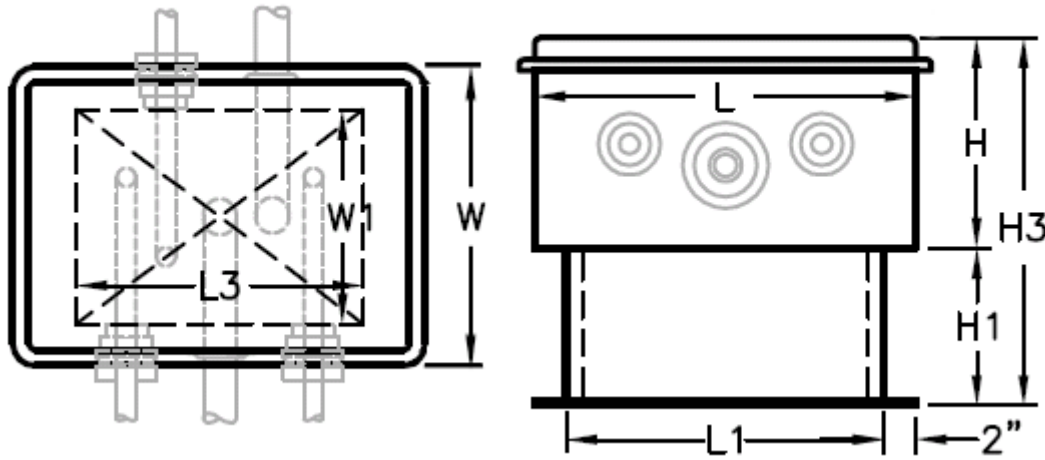
16 EACH

AW-161010

8 EACH

AW-343424

24-36 EACH



MODELS	H	H1	H3	L	L1	L3	W	W1
AW-121022	23"	14"	38"	12"	10"	7 1/2"	13"	5 1/4"
AW-161010	12"	14"	27"	16"	14 1/2"	12"	12 3/4"	5 1/2"
AW-201412	13 3/4"	14"	28 3/4"	21 1/2"	19 1/2"	16 1/2"	14 1/2"	10"
AW-343424	25"	14"	40"	34"	32"	29"	34"	29"

Dimensions may vary slightly.